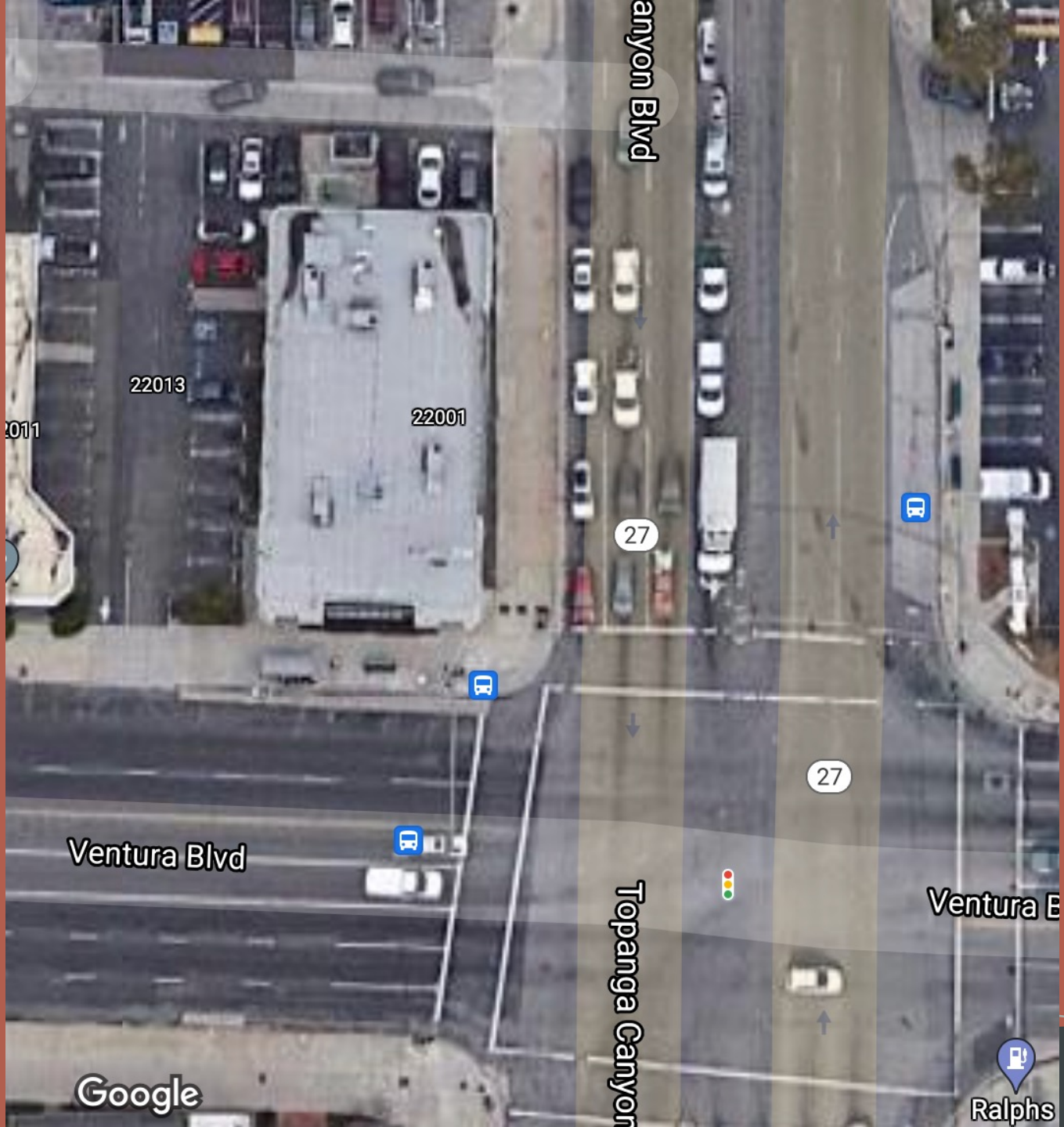




22001 Ventura Blvd
Warner Center NC
PLUM Meeting

October 21, 2021



anyon Blvd

22013

22001

2011

27

27

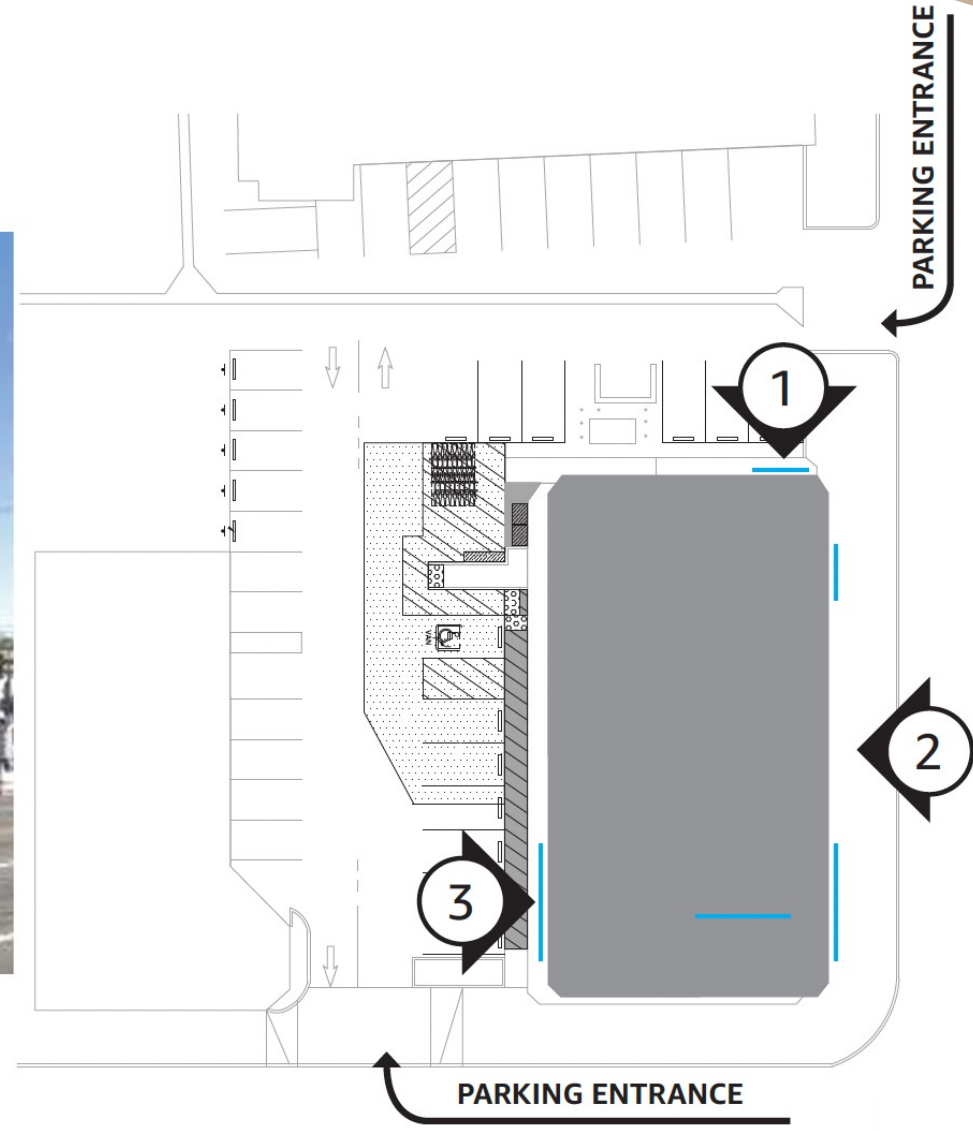
Ventura Blvd

Topanga Canyon

Ventura E

Google

Ralphs

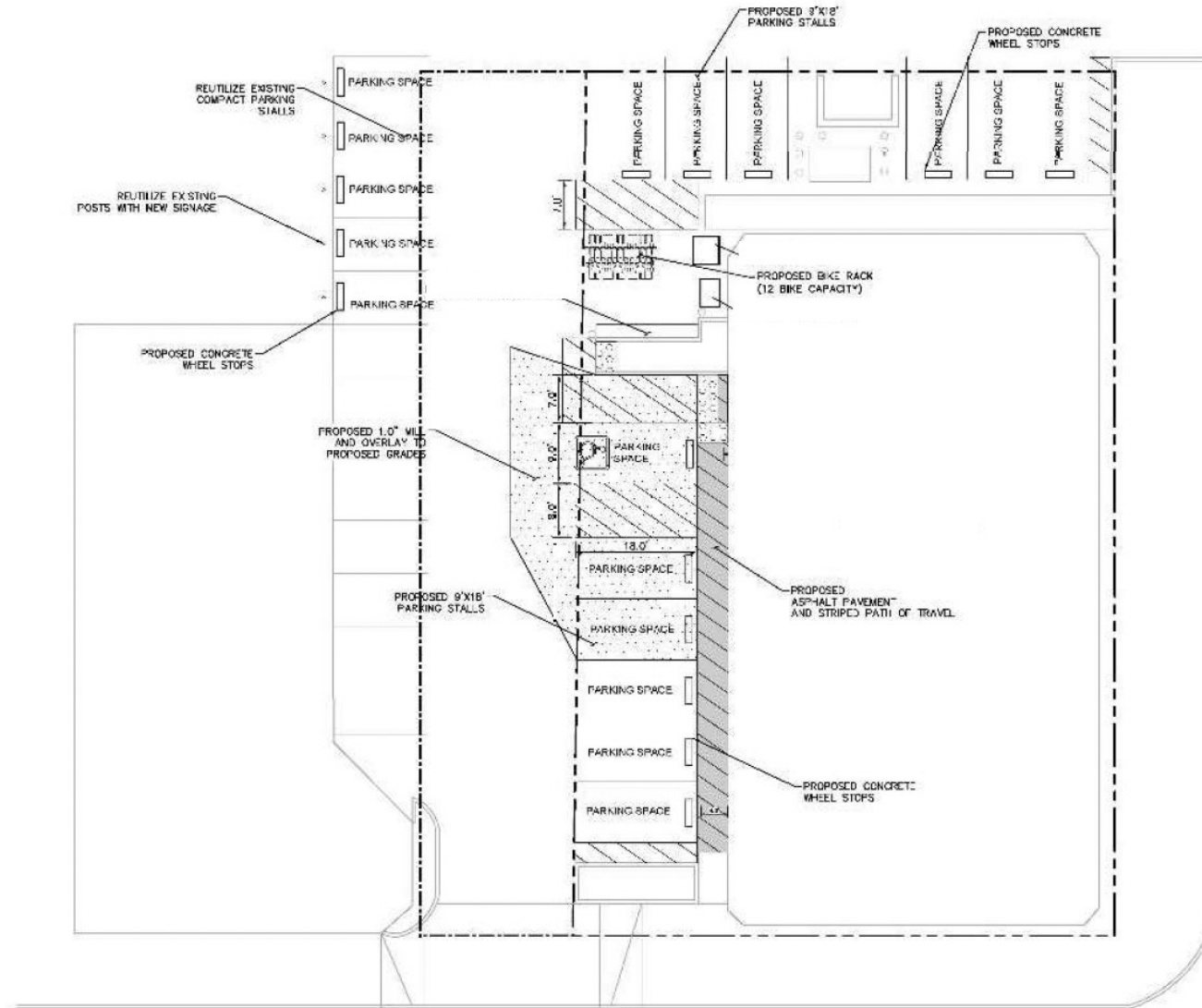


TOPANGA CANYON

VENTURA BLVD

LEGEND

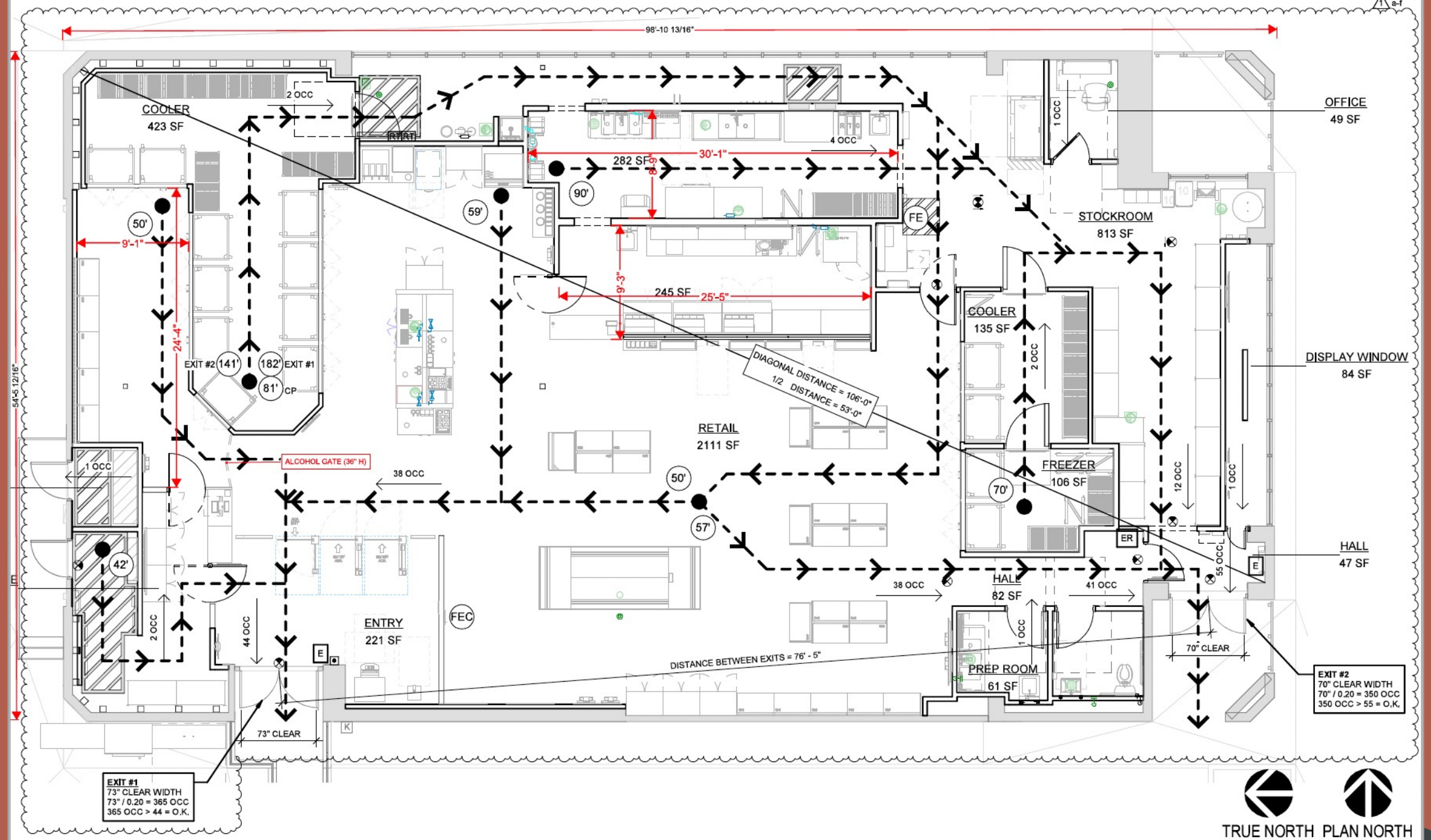
- EXISTING PROPERTY LINE
- ▨ PROPOSED ASPHALT PAVEMENT
- ▩ PROPOSED MILL AND OVERLAY



TOPANGA CANYON BLVD.

VENTURA BLVD.

WOODLAND HILLS



EXIT #1
 73" CLEAR WIDTH
 $73" / 0.20 = 365$ OCC
 365 OCC $> 44 =$ O.K.

EXIT #2
 70" CLEAR WIDTH
 $70" / 0.20 = 350$ OCC
 350 OCC $> 55 =$ O.K.



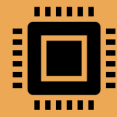
Preliminary Discussions:

Police Department - no concern
as of yet, continuing their analysis

Blumenfeld Office (Seth Samuels)

Chair of PLUM

Traffic & Circulation:



Calculations per the Institute of Traffic Engineers Trip Generation Manual:



Size of building: 4,893 SF



Walk-in Bank = **59.35**



Supermarket = **45.21**