

## WHIP Report and Draft WHIP Motion Regarding Redistricting for October 7, 2021

[a1] At the start of every decade there is a national census, after which the City of Los Angeles (and other political bodies) go through a redistricting process following the release of the Census data. [a2] They review population distribution changes, migration trends, communities of interest, commonalities (ethnicity, culture, language, religion, schools, parks, city services, shopping, healthcare, geography, jobs, environmental impacts, transportation, development, and other considerations). [a3] Considering all these factors, the Commission attempts to redraw elected officials' areas of representation to form balanced, fair, and equal regions for the voting population until the next census update.

[b1] With so many variables, the process is imprecise, and the final redrawn political boundaries are never totally equal in all aspects because compromises are required and a deviation of 10% between lowest and highest population districts is allowed but not ideal. [b2] Everyone's voice should be equal.

[c1] The City of Los Angeles has assigned the process of redrawing the city council districts to an appointed citizen's Los Angeles City Council Redistricting Commission 2021 (<https://laccrc2021.org>). [c2] They have held many public outreach meetings via Zoom, taken public comments, and posted to their website a series of maps showing different suggestions to redraw the City Council districts addressing community concerns. [c3] Each time new maps from staff are published, then Commissioners, amongst themselves, raise new concerns. Most of the public commenters have opposed the updated maps, point out their own concerns and request further changes to the Districts. [c4] One area of repeated concern is the Commission's goal of maintaining the geographic integrity of Neighborhood Councils within a single City Council district whenever possible for the ease of interfacing between the two elected city entities. [c5] Plus, the delivery of city services is often organized around council districts, complicating matters for NC's and City departments when working with each other across multiple council districts.

[d1] At the time the WHWNC Governance Committee was drafting the agenda for their September 29 committee meeting, the local press was reporting, and the Los Angeles City Council Redistricting Commission 2021 website (<https://laccrc2021.org>) displayed, proposed redistricting maps which split the Woodland Hills community (WHWCNC) into two City Council districts. [d2] Therefore, the WHWNC Governance Committee put on its agenda for discussion and possible action, whether WHWNC should go on record in support of, or oppose, the division of the WHWNC among multiple City Council districts.

[e] At the September 29 WHWNC Governance Committee, they passed a motion to bring the topic before the entire Board at the October 13 meeting with a recommended position regarding splitting the WHWCNC among multiple City Council districts. **{To avoid serial meeting issues, WHIP will not discuss this topic before it comes before the entire Board.}**

[f1] Since the September 29 Governance Committee, the Los Angeles City Council Redistricting Commission 2021 held two 6-hour Zoom meetings that some WHIP committee members attended. [f2] The Commission created and published at least two more proposed redistricting maps at these meetings and asked the public to submit their proposed maps. [f3] The Commission's last two maps are entitled K2.5 and L, which are intended to be offered for approval by the City Council to modify/choose. [f4] These iterations restored Woodland Hills to a single City Council District. However, these maps created new issues of concern for Woodland

Hills and our neighboring communities of interest and their Neighborhood Councils, whom we have a long history of working with on common areas of interest-concern.

[g1] 75-minutes of public comment, with 1-minute per speaker, was permitted at the last two Commission meetings. [g2] The Zoom moderator announced that 400-plus attendees "raised their hands" to make public comments; therefore, public attendees with "raised hands" would be selected randomly. [g3] From across the City, the majority of speakers had problems with the Commission's maps. [g4] Unfortunately, West Valley "raised hands" were not chosen to speak.

[h1] The Commission does allow Neighborhood Councils to speak for three minutes at the beginning of public comment *if* they have submitted a board-approved motion on redistricting.

[h2] Therefore, for the WHWCNC voice to be heard, the WHIP committee should bring a redistricting map recommendation to the entire Board to approve (or modify, or substitute, with their collective wisdom) to allow the Board-approved redistricting position to be presented to the Commission and the City Council.

**The Woodland Hills – Warner Center WHIP Committee moves that the full Board recommend the selected redistricting map/plan and comments designated below, so that this Neighborhood Council can inform the Los Angeles City Council Redistricting Commission 2021, the LA City Council, Council Member Blumenfield and the Mayor of its recommended preference, whenever there is an opportunity to do so.**

\_\_\_ [A] Redistricting Commission Proposed Map K2.5 [attached to report]

\_\_\_ [B] Redistricting Commission Proposed Map L [attached to report]

\_\_\_ [C] The Stakeholder Map 57666 submitted to the Commission. [attached to report]

\_\_\_ [D] Previous Redistricting Commission Map \_\_\_\_ [available at <https://laccrc2021.org/mapping-data/>]

\_\_\_ [E] Alternate Stakeholder Map \_\_\_\_ [available at <https://laccrc2021.org/mapping-data/>]

\_\_\_ [F] The WHWCNC expresses no additional opinion on which redistricting plan should be adopted for Woodland Hills – Warner Center and the surrounding Southwest Valley communities of interest.

For the following reasons:

Y N [1] The WHWCNC Board opines that all Neighborhood Councils be kept whole to the extent feasible to limit the burdens imposed by dealing with multiple City Council District Offices.

Y N [2a] The WHWCNC Board opines that City Council Districts be compact to facilitate easy access to City Council District Offices by all, make District Offices more efficient by not being spread out, and to maximize residents familiarity with district issues. [2b] Far-flung districts with disparate local communities or topography often result in Council District divisiveness regarding needs and expectations, creating difficulties for Council Members to serve their Districts.

Y N [3] The WHWCNC Board opines that redistricting, to the extent feasible, should limit the number of Community Plans, Specific Plans and similar entities that City Council Districts must attend to in order to maximize their efficiency in dealing with District Issues.

Y N [4a] The WHWCNC Board opines that it supports the Commissions goal of using Mulholland Drive as a border to the Valley and having 5 City Council Districts totally within the

Valley. [4b] We extend that goal for the sixth Council District have minimal territory extending on the other side of the Cahuenga Pass and Mulholland Dr.

**Y N [5a]** The WHWCNC Board opines that the redistricting process must acknowledge the importance of Warner Center as an economic interest for the West Valley. [5b] It must create a City Council District that maintains a strong focus on Warner Center, composed of the Neighborhood Councils that are affected by Warner Center, and avoid generating conflict with distant Neighborhood Councils competing for attention. [5c] Most Neighborhood Councils surrounding Warner Center are included in the Neighborhood Protection Plan element of the 2035 Warner Center Specific Plan and thus should be included in the same Council District as Warner Center. [5d] The same plan also has a Plan Implementation Board of appointed local community members that is overseen by the Council Member for Warner Center and that Board directs the funding priorities of the Plan's mitigation projects within the West Valley.

**Y N [6]** The WHWCNC Board opines that while elections expressing voters desires are periodic, City Council Districts and their Neighborhood Councils need to work together efficiently and continuously and this is why the needs of Neighborhood Councils should have relatively high priority when creating Council Districts that will function well.

**Y N [7a]** The WHWCNC Board opines that keeping communities of interest together is very important for the city because when a group of Neighborhood Councils share environmental concerns, retail centers, facilities, healthcare, traffic systems, schools, the same social infrastructure, whether it be Chambers of Commerce, sports leagues, recreational areas, service and social organizations, languages, or religious institutions. [7b] Adjoining Neighborhood Council and communities are much stronger as a compact greater community. They work better together than when they are separated into different districts. With less reason to combine their efforts, working together is much more difficult.

**Y N [8a]** The WHWCNC Board opines that the Warner Center Specific Plan strongly affects all the surrounding communities and is a vital economic interest to all of them. [8b] Warner Center is a city-designated Regional Center serving as the "Downtown" of the West Valley. Warner Center is in Woodland Hills and Canoga Park. [8c] It should not be in 2 or more City Council Districts.

**Y N [9a]** The WHWCNC Board opines that Map K 2.5 does not serve the best interests of our greater local community groups and violates the important premise of keeping communities of interest in the same Council District. [9b] Woodland Hills shares a much greater community interest with its West Valley neighbors than it does with communities east of the 405 Fwy like Valley Village and Valley Glen or Studio City that are included with Woodland Hills in Map K 2.5.

**Y N [10a]** The WHWCNC Board opines that Map K 2.5 will quickly dilute the votes of the Council District for Warner Center. [10b] With an excess population of almost 12,000, the K 2.5 Map maximizes the future district population overage for the West Valley from the ideal. [10c] According to the draft Housing Element expectations, based on the recent growth, future known West Valley population growth will be led by Warner Center. [10d] Map K 2.5 does not account for the additional 10,000+ residential units to be built over the next 8 years above and beyond the units already approved or under construction. [10e] This could result in over 20,000 additional residents in just Warner Center making the District population way off the ideal.

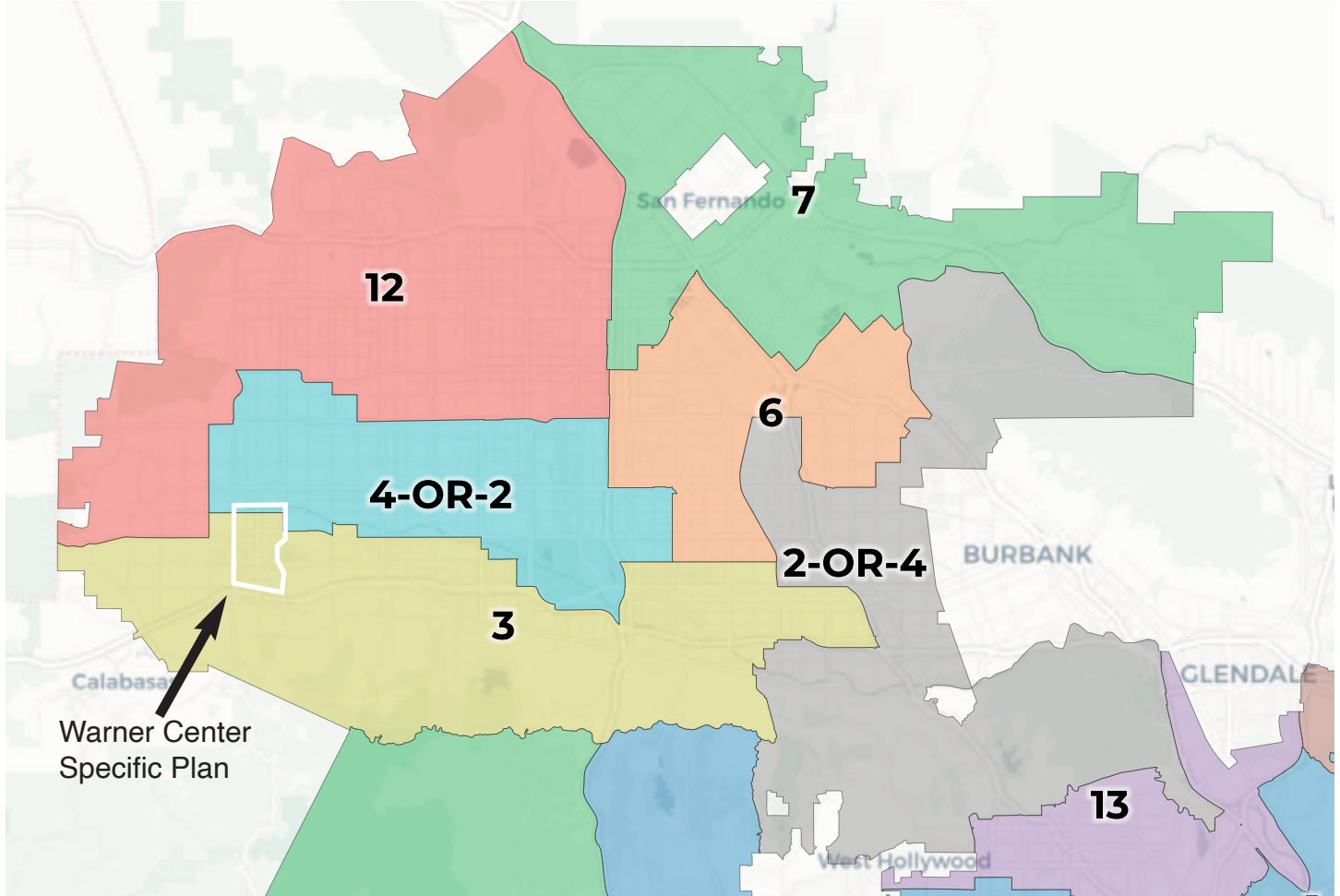
**Y N [11a]** The WHWCNC Board opines that Map L does not serve the best interests of Neighborhood Councils. [11b] It violates the principal of keeping Neighborhood Councils whole.

Neighborhood Councils must not be split between 2 or 3 Council Districts. [11c] A Council District on both sides of Mulholland Drive results in interests located outside of the Valley taking away a Council Districts focus on Valley interests. [11d] A Council Member should not be put into a position of divided loyalty. [11e] Map L violates the goal of compactness as the residents of Reseda and Lake Balboa Neighborhood Councils (north of the US101 Fwy) have minimal to no local common interests with residents of the West Los Angeles and Palms Neighborhood Councils (south of the I-10 Fwy).

Y N [12] The WHWCNC Board opines that Stakeholder Map 57666 (a) maintains the integrity of Valley Neighborhood Councils being in just one City Council District, (b) maintains the goal of compact City Council Districts, which (c) maintains the additional goal of keeping together day-to-day local communities of interest. The Stakeholder Map minimizes deviation of populations for the West Valley from the ideal to account for future population growth led by Warner Center, which will add over 10,000 residential units beyond units approved or under construction (the future residents not included by the census) within 8 years according to the draft Housing Element based on recent growth.

Y N [13] The WHWCNC Board opines that \_\_\_\_\_

# Redistricting Commission's Proposed Map K2.5



Populations (Ideal is 260,808)

CD 3	272,775	CD 7	249,412	CD 2 or 4	260,241
CD 12	255,676	CD 6	255,097	CD 4 or 2	250,365

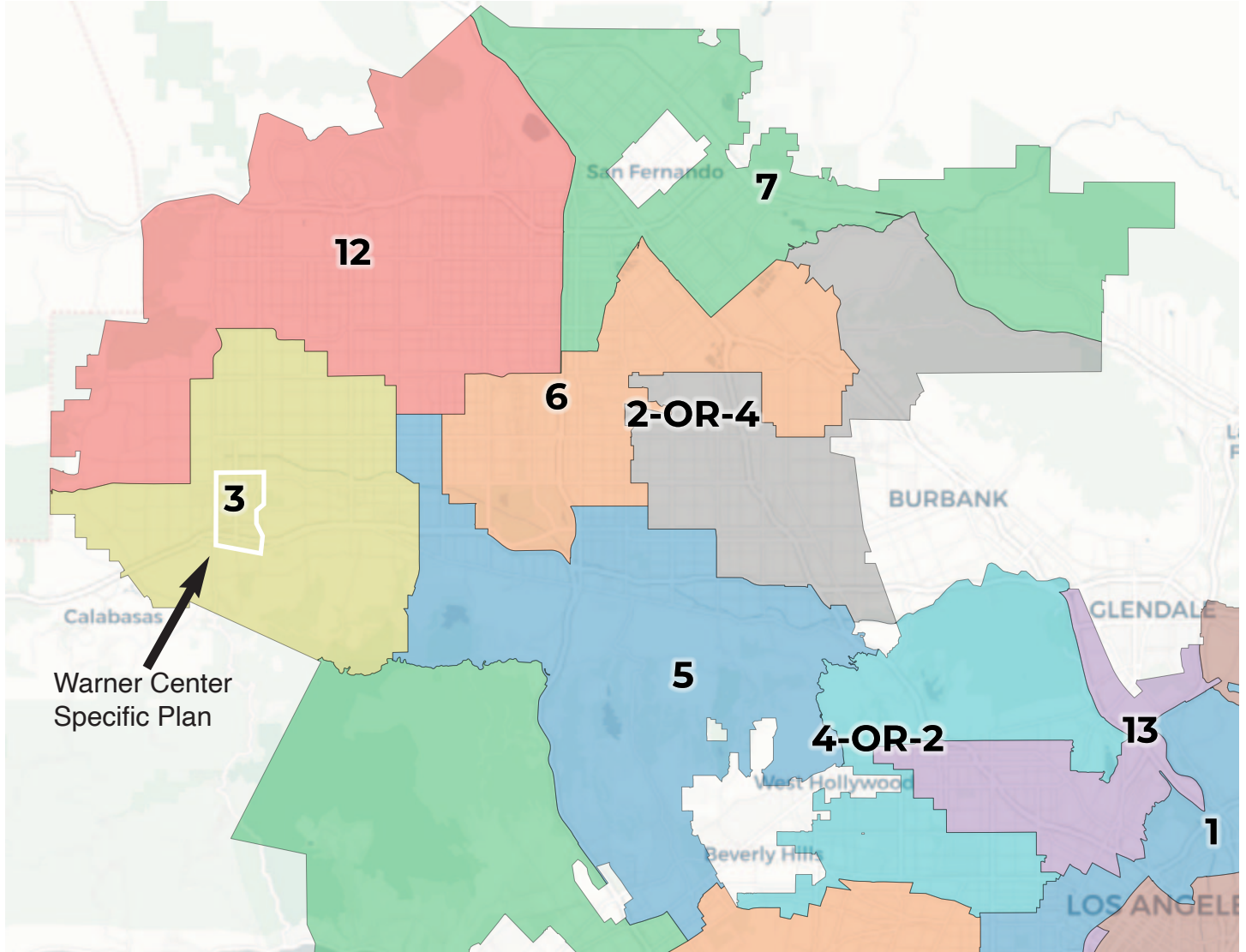
## Observations:

- CD 3 loses Canoga Park, Winnetka, and Reseda keeping Tarzana.
- CD 3 gains Encino, Sherman Oaks, Valley Village and parts of Valley Glen and Van Nuys.
- CD 3 becomes 16.6 miles wide.
- Warner Center is in 2 Districts and affects 3 Districts.
- Warner Center alone will gain 10,000 to 20,000 in population in the next 10 years when this CD3 deviation is already almost +12,000 which dilutes CD 3 votes.

- 75-80% of Ventura Boulevard is in one district affecting the membership of the Plan Review Board.
- NCs along Ventura Boulevard have different goals that are split east and west by the 405 Freeway.
- Woodland Hills and Valley Glen/Valley Village have little common economic interests.
- Easy valley communities will draw district attention away from Warner Center and the West Valley.
- Much of the Orange Line will be in one district.

- The western middle district will have a focus on needs of Hispanic voters with minimal interest in Warner Center.
- CD 12 will have minimal interest in Warner Center.
- Map splits too many NCs.
- “Entertainment District” (2-or-4) appears to be focused on Armenian populations.
- CD “2-or-4” and CD 3 are not compact and easy for a district to serve all citizens well.
- Shadow Hills has little in common with Hollywood Hills and Los Feliz/Griffith Park.

# Redistricting Commission's Proposed Map L



Populations (Ideal is 260,808)

CD 3	261,527	CD 7	265,245	CD 2 or 4	250,478
CD 12	271,831	CD 6	254,660	CD 5	269,399

## Observations:

CD 3 keeps Canoga Park, Winnetka, Tarzana and less of Reseda.

Map maintains most of the Current CD 12 and CD 3 as is and the affect of Warner Center.

Warner Center affects same 2 Districts as now.

Reseda is in 3 districts.

Reseda is in a District stretching all the way to Palms NC. The District will have a lot of influence

from UCLA, West LA, BelAire, Beverly Crest and Hollywood Hills drawing attention away from Reseda.

- Reseda's needs are different than those of Studio City, Belaire or West LA.

- Ventura Boulevard only in 2 Districts, weighted in favor of CD 5.

- Mulholland development and Specific Plan under mostly 1 District.

- CD 5 controls 2 significant Spe-

cific Plans.

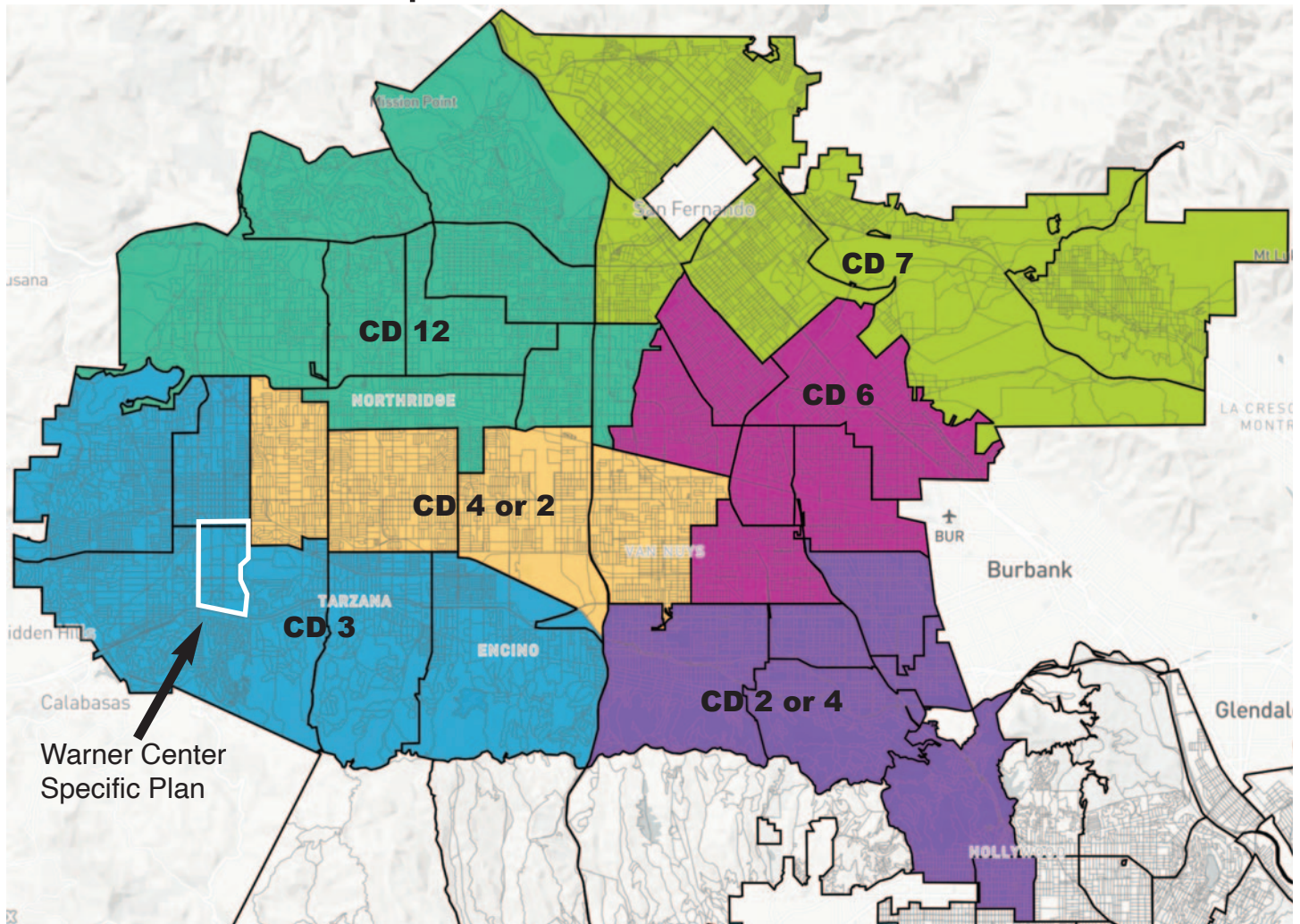
- CD 3 is compact but CD "2-or-4" and CD 5 are not compact and easy for a district to serve all citizens well.

- The needs of Latinx populations are diluted especially inn CD 5.

- CD 12 has the highest positive deviation in population with Porter Ranch expected to continue to grow in population.

CD 3 has an almost ideal population.

# Stakeholder Map 57666 with NC Boundaries



## Observations:

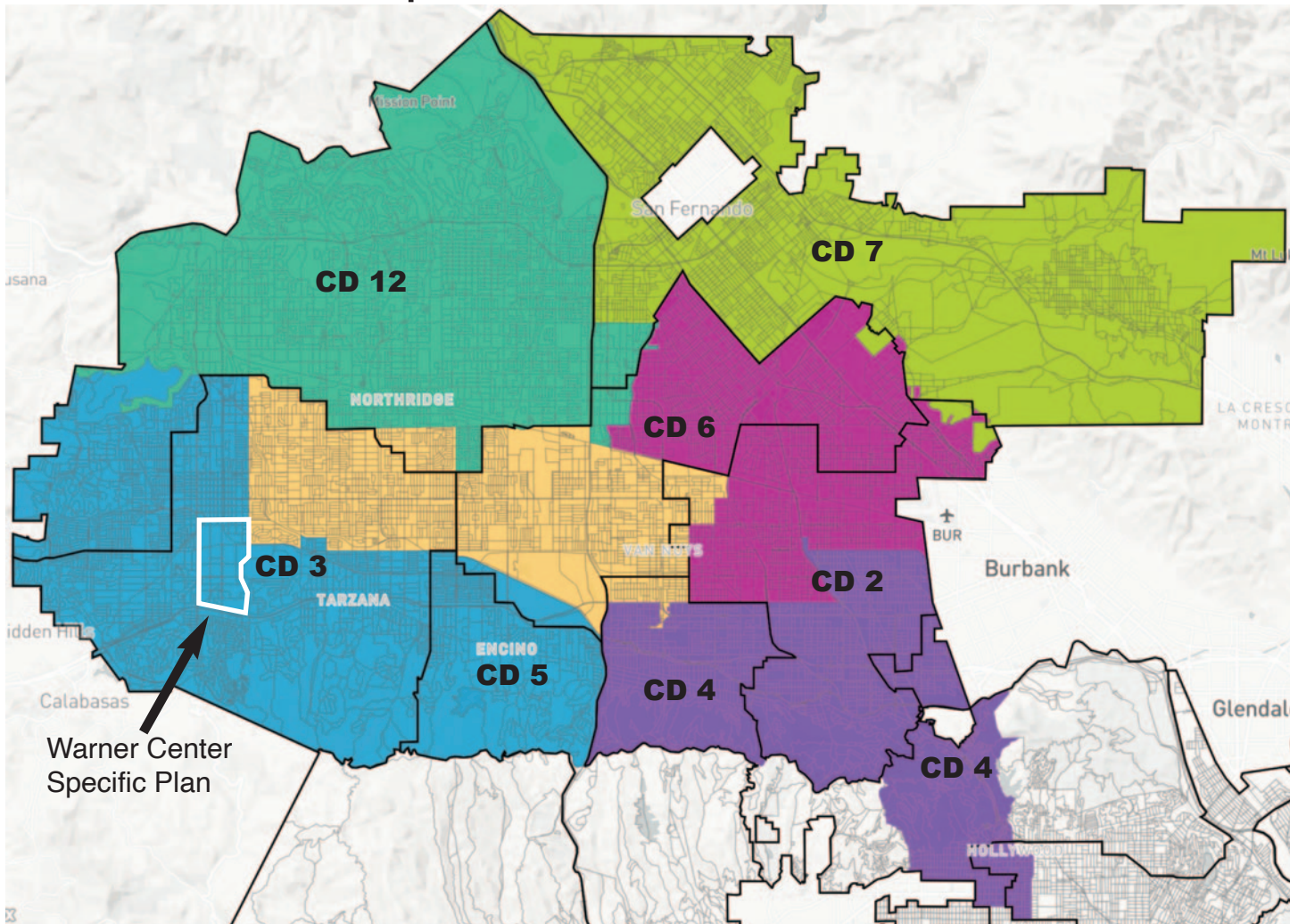
- CD 3 keeps Canoga Park and Tarzana, loses Winnetka and Reseda and gains West Hills.
- Warner Center affects 2 Districts as now but differently.
- All NCs are whole with exception of part of Sepulveda basin important to Encino with no population/voters.
- Ventura Boulevard only in 2 Council Districts, with control weighted more equally.
- CD 3 is slightly under ideal population, but growth of senior living and large apartment complexes in Warner Center will add 10-20,000 population over

next decade.

- Mulholland development and Specific Plan under 4 Council Districts.
- All Districts are relatively compact making it easier for a district to serve all citizens well.
- Mid-Valley District focused on the needs of Latinx populations.
- Mid-Valley District has a negative population deviation to accommodate ADU growth in the West Valley where it is most feasible due to terrain limitations of CD 3 and CD12.
- CD 12 has almost the ideal population with Porter Ranch expected to continue to grow in population

- CD 12 is close to current area except it loses West Hills and gains North Hills East.
- CD 7 remains much like it is now.
- This map minimizes the territory of Valley Districts outside of the Valley and still includes a small entertainment District.
- Hillside areas are focused in fewer districts than currently so development issues get more attention.
- The CD 3 contains the most important parts of the Orange Line that will support Warner Center economy.

# Stakeholder Map 57666 with Current Districts



## Population Balance

① Uses 2020 Decennial Census population with processing by Redistricting Partners on 2020 Blocks.



## CD3 Comparison Chart By Map

	K 2.5	L	Stakeholder
Ethnicity			
Other Voters	74%	54.6%	68.1%
Latinx Voters	13.8%	27.5%	17.5%
Black Voters	5.2%	5.9%	4.8%
Asian Voters	6.9%	12.1%	9.6%
Ideal Pop. Deviation	+11,967	+909	-3,138